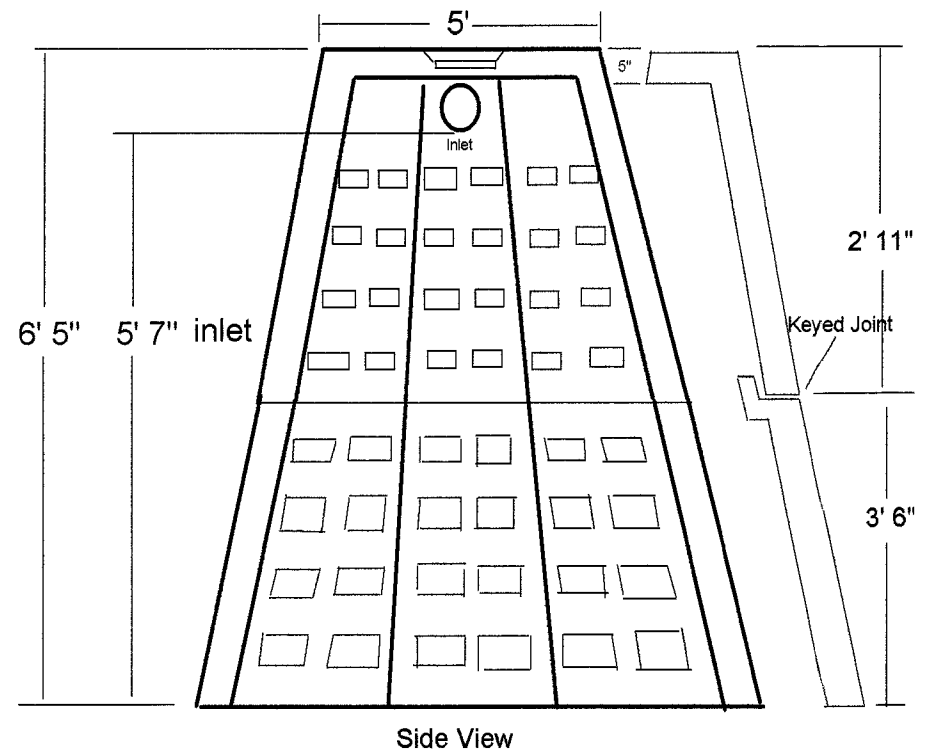
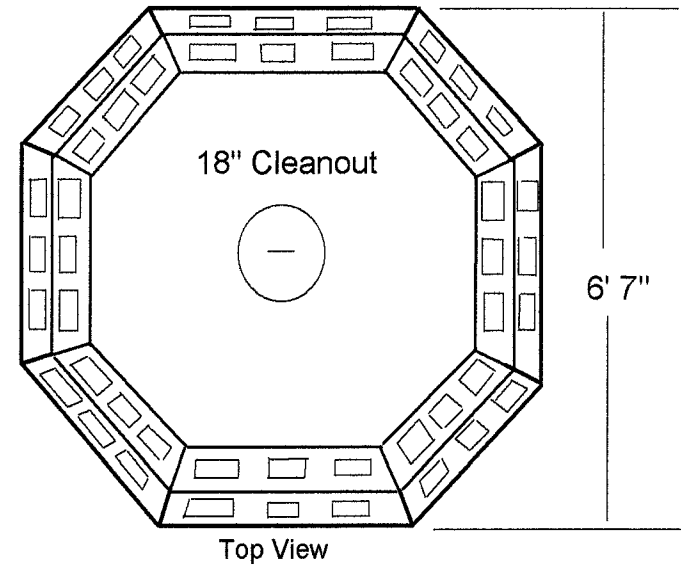
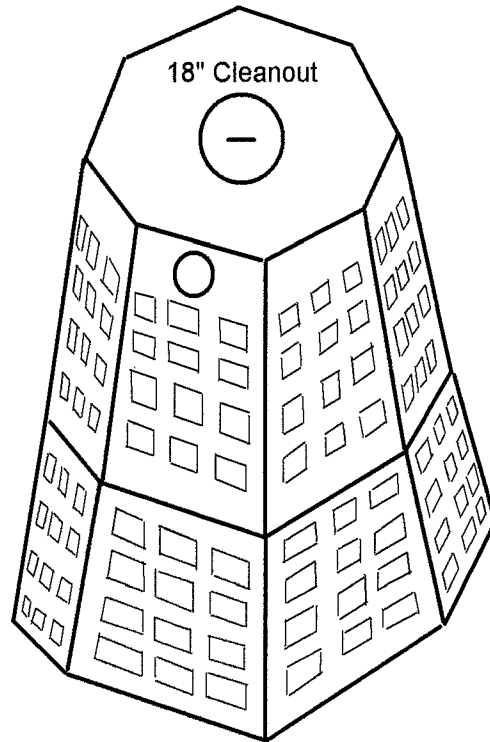


**Atlas Concrete Products**  
**1-800-774-1112**

**1000 Gal Dry Well**  
**Octagonal 2 Pieces**



**Notes**

**Concrete Compressive strength 4,000 @ 28 days**

**Meets state and local specifications**

**Reinforced 6 x 6 10 Ga. Mesh**

**Weight 4300 Lbs**